

Southeast Roseville Land Use Summary

GENERAL PLAN LAND USE (Specific Plan Land Use)	ACRES	% OF TOTAL ACRES	UNITS	% OF TOTAL UNITS
<i>RESIDENTIAL</i>				
LDR (Residential)	478.14	46.62%	1,779	56.24%
HDR (Residential)	62.19	6.06%	984	31.11%
HDR (Elderly Housing)	18.68	1.82%	400	12.65%
<i>Subtotal</i>	559.01	54.50%	3,163	100.00%
<i>SERVICE AND EMPLOYMENT</i>				
CC (Commercial)	51.30	5.00%	0	0.00%
CC (Racquet Club)	14.93	1.46%	0	0.00%
CC (Wholesale/Retail Nursery)	17.00	1.66%	0	0.00%
BP (Business Professional)	99.30	9.68%	0	0.00%
<i>Subtotal</i>	182.53	17.80%	0	0.00%
<i>OPEN SPACE AND PUBLIC</i>				
OS (Floodway)	24.74	2.41%	0	0.00%
OS (Recreation Floodway)	40.81	3.98%	0	0.00%
OS (Vernal Pool Preserve Area)	8.48	0.83%	0	0.00%
PR (Maidu Park Addition)	24.06	2.35%	0	0.00%
PR (Park)	41.40	4.04%	0	0.00%
PR (Private Recreation)	45.84	4.47%	0	0.00%
PQP (Substation)	2.11	0.21%	0	0.00%
PQP (School)	15.01	1.46%	0	0.00%
PQP (Daycare)	1.59	0.16%	0	0.00%
PQP (Fire Station)	1.57	0.15%	0	0.00%
ROW (Right of Way)	78.29	7.66%	0	0.00%
<i>Subtotal</i>	284.16	27.70%	0	0.00%
Total	1,025.44	100.0%	3,163	100.0%

Last Updated: December 10, 2014

SOUTHEAST ROSEVILLE LAND USE PLAN

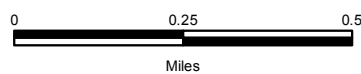
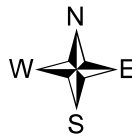
Figure 7



Land Use Designation		Acres
LDR	Residential	478.14
HDR	Elderly Housing	18.68
	Residential	62.19
CC	Commercial	51.30
	Raquet Club	14.93
BP	Wholesale/Retail Nursery	17.00
	Business Professional	99.30
OS	Floodway	24.74
	Recreation Floodway	40.81
	Vernal Pool Preserve Area	8.48
PR	Maidu Park Addition	24.06
	Park	41.40
P/QP	Private Recreation	45.84
	Daycare	1.59
P/QP	Fire Station	1.57
	School	15.01
	Substation	2.11
ROW	Right of Way	78.29

*See Land Use By Parcel tables for Unit totals

Totals: 1,025.44



Southeast Roseville Land Use by Parcel Number

Parcel	General Plan Land Use (Specific Plan Land Use)	Zoning	Acres	Allocated Units	Density
1	CC (Commercial)	CC/SA-SE	6.44		
2	CC (Commercial)	CC/SA-SE	4.47		
3	BP (Business Professional)	BP/SA-SE	9.22		
4	BP (Business Professional)	BP/SA-SE	2.49		
5	BP (Business Professional)	BP/SA-SE	12.59		
6	LDR (Residential)	R1	8.89	37	4.2
7A	BP (Business Professional)	BP/SA-SE	3.01		
7B	BP (Business Professional)	BP/SA-SE	2.85		
7C	BP (Business Professional)	BP/SA-SE	3.09		
7D	BP (Business Professional)	BP/SA-SE	9.22		
7E	BP (Business Professional)	BP/SA-SE	20.61		
8A	HDR (Residential)	R3	19.14	262	13.7
8B	LDR (Residential)	R1/DS	25.50	137	5.4
9A	HDR (Elderly Housing)	R3/SA-SE	2.69	50	18.6
9B	HDR (Elderly Housing)	R3/SA-SE	3.52	110	31.3
9C	HDR (Elderly Housing)	R3/SA-SE	3.32	76	22.9
9D	HDR (Elderly Housing)	R3/SA-SE	3.28	84	25.6
10	PQP (Fire Station)	P/QP	1.57		
11	HDR (Elderly Housing)	R3/SA-SE	5.87	80	13.6
12	PQP (Daycare)	P/QP/SA-SE	1.59		
13	LDR (Residential)	R1/DS	18.37	114	6.2
13B	OS (Floodway)	OS/FW	3.26		
16	LDR (Residential)	R1	21.96	92	4.2
18	LDR (Residential)	R1/DS	22.74	106	4.7
19	LDR (Residential)	R1	23.99	149	6.2
20	CC (Commercial)	CC	21.70		
21	BP (Business Professional)	BP/SA-SE	10.88		
24	LDR (Residential)	R1	15.94	52	3.3
26	PQP (Substation)	P/QP	2.11		
27	CC (Racquet Club)	PR/SA-SE	14.93		
28	PQP (School)	P/QP	8.00		
29	HDR (Residential)	R3	38.70	612	15.8
30	BP (Business Professional)	BP/SA-SE	25.34		
32	HDR (Residential)	R3	4.35	110	25.3
34	LDR (Residential)	R1/DS	19.26	70	3.6
35	LDR (Residential)	R1/DS	19.81	66	3.3
37	CC (Commercial)	CC/SA-SE	5.95		
40	CC (Commercial)	CC/SA-SE	12.74		
41	LDR (Residential)	R1	91.85	297	3.2
42	LDR (Residential)	R1/DS-SE & OS	72.34	204	2.8
43	LDR (Residential)	R1/DS	55.64	209	3.8
44	LDR (Residential)	R1/DS	4.55	12	2.6
45	LDR (Residential)	R1/DS	6.53	15	2.3
46	LDR (Residential)	R1/DS-SE & OS	23.99	57	2.4
49	LDR (Residential)	R1	41.24	146	3.5
50	PR (Maidu Park Addition)	PR	9.00		
51	PR (Maidu Park Addition)	PR	14.40		
52	PQP (School)	P/QP	7.01		

53	PR (Maidu Park Addition)	PR	0.66		
54	LDR (Residential)	PD423	1.03	0	0.0
55	LDR (Residential)	R1/DS-SE	4.51	16	3.5
61	PR (Park)	PR	15.03		
62	PR (Park)	PR	3.74		
63	PR (Park)	PR	10.76		
64	PR (Park)	PR	11.87		
70	OS (Floodway)	OS/FW	5.37		
71	OS (Recreation Floodway)	OS/FW	6.66		
72	OS (Floodway)	OS/FW	9.02		
73	OS (Recreation Floodway)	OS/FW	15.97		
74	OS (Recreation Floodway)	OS/FW	6.72		
75	OS (Recreation Floodway)	OS/FW	11.46		
76	OS (Floodway)	OS/FW	7.09		
80	PR (Private Recreation)	PR	11.36		
81	CC (Wholesale/Retail Nursery)	PD240	17.00		
82	PR (Private Recreation)	PR	22.49		
83	OS (Vernal Pool Preserve Area)	OS	8.48		
84	PR (Private Recreation)	PR	9.37		
85	PR (Private Recreation)	PR	2.62		
ROW	ROW (Right of Way)	ROW	78.29		
Total			1,025.44	3,163	

Notes:

-A verification study conducted in December 2006 resulted in minor adjustments to the acreage and number of dwelling units

Last Updated: December 10, 2014