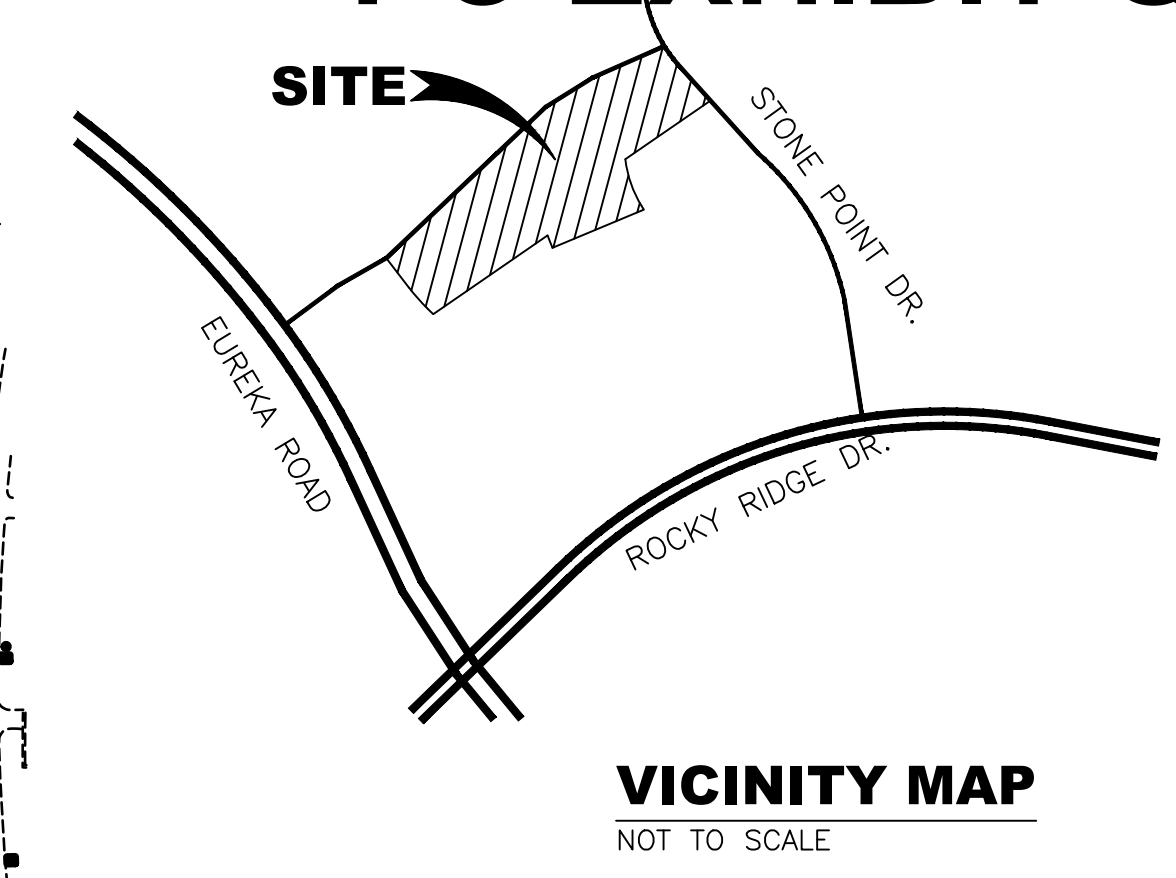
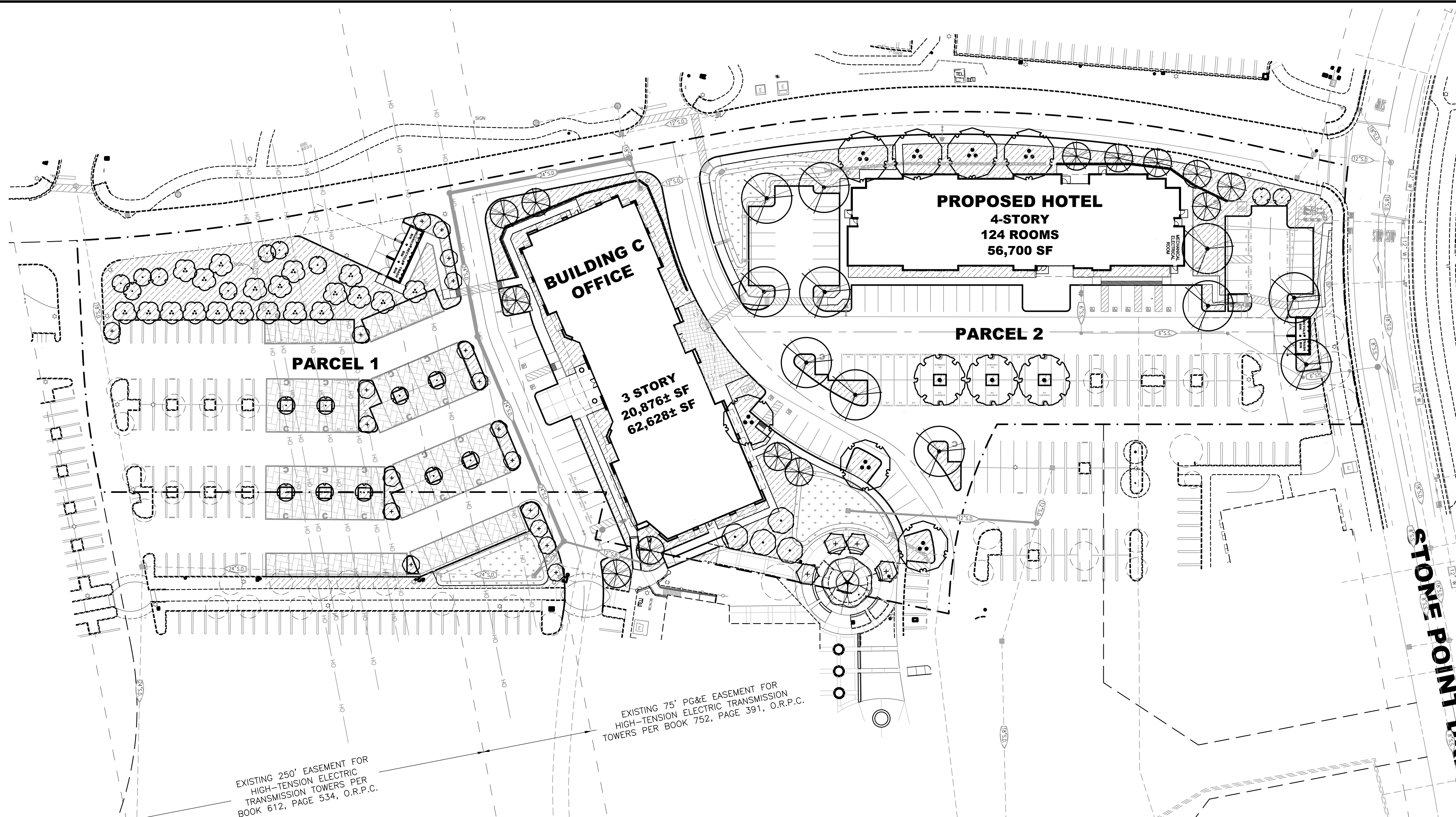


# PC EXHIBIT Q



**EUREKA DEVELOPEMENT CO, LLC**  
1508 EUREKA ROAD, SUITE 1745  
ROSEVILLE, CA 95661

REV. NO.	DATE	DESCRIPTION



**RSC ENGINEERING**  
1420 Rocky Ridge Drive, Suite 150  
Roseville, CA 95661  
Ph: 916.788.2884 Fax: 916.788.4408

PROJECT NO: 330-002  
DRAWN BY: RSC Eng  
CHECKED BY: RSC Eng  
DESIGNED BY: RSC Eng

**PRELIMINARY PLANS FOR STONEPOINT HOTEL AND OFFICE**  
STONE POINT DRIVE  
ROSEVILLE, CA 95661

SHEET TITLE  
**PRELIMINARY PLANTING PLAN**

SHEET NO.  
**L1**

DATE: OCTOBER 17, 2025

### TREE SCHEDULE

SYMBOL	BOTANICAL / COMMON NAME	SIZE	WATER USE	QTY
	ACER RUBRUM 'FRANK JR.' REDPOINTE® MAPLE	15 GAL.	MOD	13
	LAGERSTROEMIA INDICA 'CHEROKEE' CHEROKEE CRAPE MYRTLE	24" BOX	LOW	19
	LAGERSTROEMIA INDICA 'WATERMELON RED' WATERMELON RED CRAPE MYRTLE	24" BOX	LOW	4
	MALUS X 'SARGENTII' SARGENT CRABAPPLE	15 GAL.	MOD	20
	NYSSA SYLVATICA TUPELO	15 GAL.	MOD	4
	PISTACIA CHINENSIS 'KEITH DAVEY' KEITH DAVEY CHINESE PISTACHE	15 GAL.	MOD	11
	PLATANUS X ACERIFOLIA 'COLUMBIA' COLUMBIA LONDON PLANE TREE	15 GAL.	MOD	3
	PRUNUS CERASIFERA 'PURPLE PONY' PURPLE PONY PURPLE-LEAF PLUM	24" BOX	MOD	19
	QUERCUS WISLIZENI NATURAL MULTI INTERIOR LIVE OAK	60" BOX	LOW	1
	ULMUS PARVIFOLIA 'TRUE GREEN' TRUE GREEN LACEBARK ELM	15 GAL.	MOD	7

### CONCEPT PLANT SCHEDULE

	<b>SCREENING</b> JUNIPERUS SCOPULORUM 'SKYROCKET' / SKYROCKET JUNIPER LEPTOSPERMUM SCOPARIUM 'RUBY GLOW' / RED NEW ZEALAND TEA TREE RHAMNUS CALIFORNICA 'EVE CASE' / EVE CASE COFFEEBERRY PRUNUS CAROLINIANA 'COMPACTA' / COMPACT CAROLINA CHERRY LAUREL
	<b>ACCENT/COLOR</b> CALAMAGROSTIS X ACUTIFLORA 'KARL FORESTER' / FEATHER REED GRASS DIANELLA REVOLUTA 'DR5000' TM / LITTLE REV FLAX LILY LOMANDRA LONGIFOLIA PLATINUM BEAUTY / PLATINUM BEAUTY LOMANDRA
	<b>GROUNDCOVER</b> JUNIPERUS HORIZONTALIS 'BLUE CHIP' / BLUE CHIP CREEPING JUNIPER BACCHARIS PILULARIS 'PIGEON POINT' / PIGEON POINT COYOTE BRUSH TEUCRIUM CHAMAEDRYS 'PROSTRATUM' / PROSTRATE GERMANDER WESTRINGIA FRUTICOSA 'WES06' / LOW HORIZON™ COAST ROSEMARY
	<b>FILLER</b> CORREA X 'IVORY BELLS' / IVORY BELLS AUSTRALIAN FUCHSIA MAHONIA EURYBRACTEATA 'SOFT CARESS' / MAHONIA SOFT CARESS EURYOPS PECTINATUS / GOLDEN SHRUB DAISY ROSMARINUS OFFICINALIS 'TUSCAN BLUE' / TUSCAN BLUE ROSEMARY
	<b>BIOFILTRATION SOD</b> TURF SOD BIOFILTRATION SOD / DELTA BLUEGRASS BIOFILTRATION SOD

TOTAL LANDSCAPE AREA = 43,689 S.F.

### SHADE CALCULATIONS - PARCEL 1

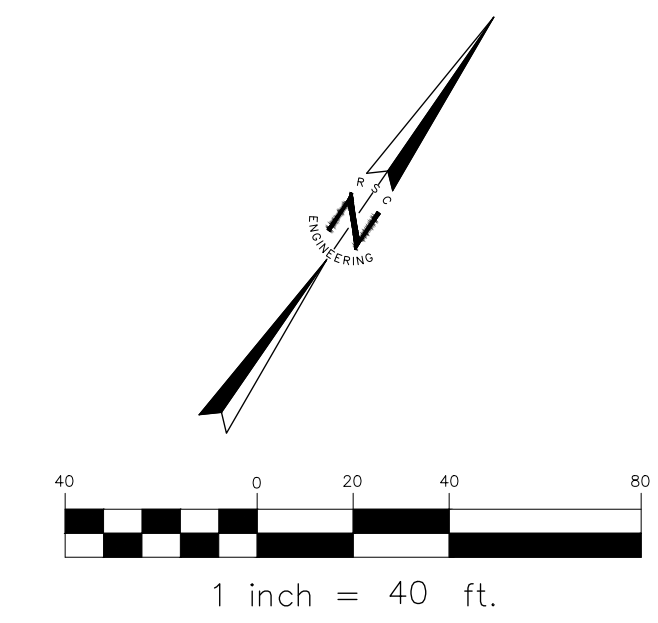
TOTAL PAVED AREA:	34,980 S.F.		
TOTAL SHADE REQUIRED (50%):	17,490 S.F.		
TOTAL SHADE PROVIDED (26.5%):	9,263 S.F.		
DIA.	QTY.	S.F.	TOTAL S.F.
<b>20' TREES</b>			
LAGC, MALS, PRUP			
100%	20	314	6,280
75%	0	236	0
50%	19	157	2,983
25%	0	79	0
TOTAL SHADE PROVIDED BY TREES:		9,263 S.F.	

### SHADE CALCULATIONS - PARCEL 2

TOTAL PAVED AREA:	29,866 S.F.		
TOTAL SHADE REQUIRED (50%):	14,933 S.F.		
TOTAL SHADE PROVIDED (50.7%):	15,151 S.F.		
DIA.	QTY.	S.F.	TOTAL S.F.
<b>35' TREES</b>			
PISK, PLAC, ULMT EXIST			
100%	7	962	6,734
75%	0	722	0
50%	17	481	8,177
25%	1	240	240
TOTAL SHADE PROVIDED BY TREES:		15,151 S.F.	

### PRELIMINARY LANDSCAPE DESIGN NOTES

- ALL LANDSCAPED AREAS SHALL BE IRRIGATED USING AN AUTOMATIC IRRIGATION SYSTEM THAT WILL BE COMPLIANT WITH THE STATE'S WATER EFFICIENT LANDSCAPE ORDINANCE.
- TREE PLANTING LOCATIONS, INCLUDING WELLS, ISLANDS, PARKWAYS, MEDIANS, ETC. SHALL PROVIDE ADEQUATE UNCOMPACTED SOIL AREA AMENABLE TO ROOT GROWTH. THE DEPTH OF SUITABLE SOIL SHALL BE A MINIMUM OF 24 INCHES AND A MAXIMUM OF 36 INCHES UNLESS OTHERWISE APPROVED.
- ROOT BARRIERS SHALL BE PROVIDED FOR TREES IN LANDSCAPE PLANTERS LESS THAN TEN FEET IN WIDTH OR LOCATED FIVE FEET OR CLOSER TO A PERMANENT STRUCTURE. ROOT BARRIER(S) SHALL NOT INTERFERE WITH MINIMUM PLANTING SITE REQUIREMENTS.
- ALL SHRUB AND GROUND COVER AREAS SHALL RECEIVE A 3" LAYER OF BARK CHIP MULCH TOP DRESSING.
- GROUND COVERS SHALL NOT BE INSTALLED WITHIN A 4" RADIUS OF A TREE TRUNK.



**FUHRMAN LEAMY LAND GROUP**  
DESIGN • SERVICE • SOLUTIONS  
2140 PROFESSIONAL DRIVE, SUITE 115 ROSEVILLE, CA 95661  
916-783-5263 info@fillandgroup.com

CITY OF ROSEVILLE APPROVAL

DRAWING: A. COMMERCE/AVELIC, RSC ENGINEERING, INC. PROJECT: STONE POINT HOTEL, 1508 EUREKA ROAD, SUITE 1745, ROSEVILLE, CA 95661  
 DATE: OCTOBER 17, 2025  
 SCALE: AS SHOWN  
 SHEET: L1 OF L1